

# State of Wyoming Corner Record

(In compliance with the **CORNER PERPETUATION AND PILING ACT**, Wyoming Statutes, 1997 Section 33-29-140 et. seq., and the Rules and Regulations of the Board of Professional Engineers and Professional Land Surveyors)

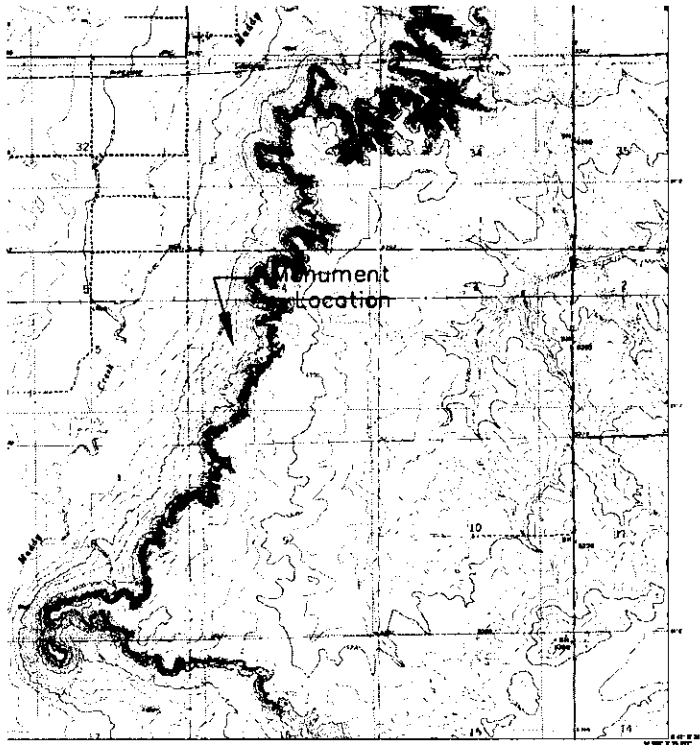
Reverse side of this form may be used if more space is needed.

Record of original survey and citation of source of historical information (if corner is lost or obliterated). Description of corner monumentation evidence found and/or monument and accessories established to perpetuate the location of this corner. Sketch of relative location of monument, accessories, and reference points with course and distance to adjacent corner(s) (if determined in this survey). Method and rationale for reestablishment of lost or obliterated corner.

**FOUND:** NOTHING

**SET:** 3 1/4" ALUMINUM CAP  
30" NO. 6 REBAR

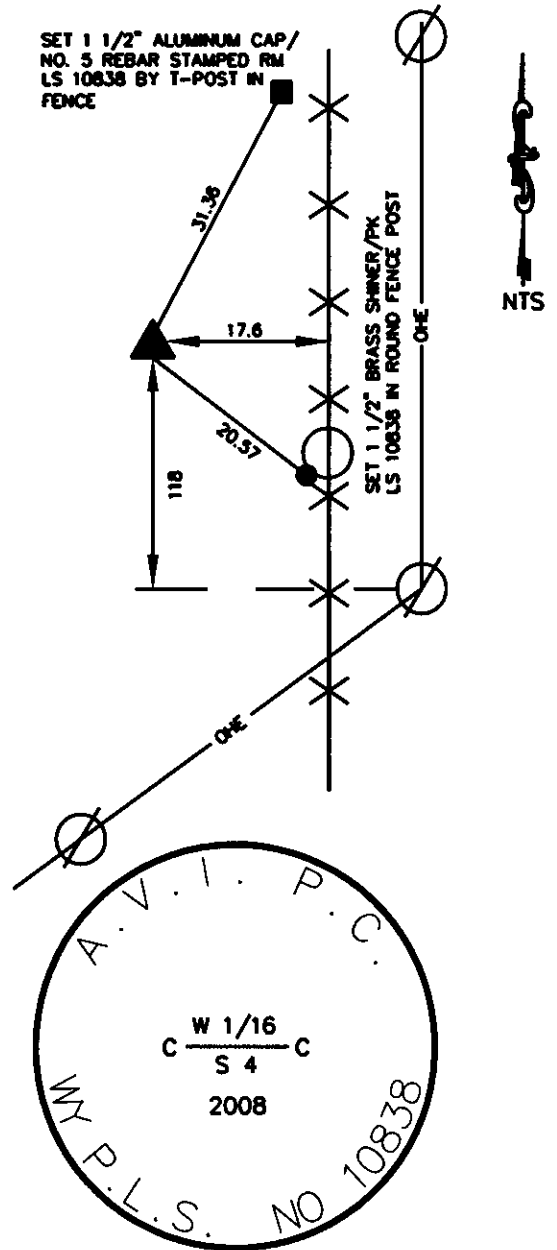
N 89° 47' 25"W 2626.28' TO N ¼ SEC. 4  
S 00° 27' 42"W 2492.82' TO E ¼ SEC. 4



**Monument location**

Date of Field Work: 6/25/08

Office Reference: 2908



**Monument Inscription**

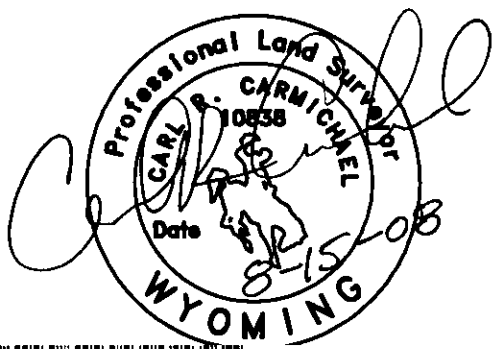
## Cross Index Plat

	1	2	3	4	5	6	7	8	9	10	11	12	13	14	15	16	17	18	19	20	21	22	23	24	25	
A																										
B																										
C																										
D																										
E																										
F																										
G																										
H																										
J																										
K																										
L																										
M																										
N																										
O																										
P																										
Q																										
R																										
S																										
T																										
U																										
V																										
W																										
X																										
Y																										
Z																										
	1	2	3	4	5	6	7	8	9	10	11	12	13	14	15	16	17	18	19	20	21	22	23	24	25	

Firm/Agency, Address                      This corner record was prepared  
by me or under my direction  
and supervision.

AVI P.C.    SEAL & SIGNATURE  
2035 WESTLAND RD.  
CHEYENNE, WY. 82001

Telephone Number: 307-637-6017



RECORDED 8/15/2008 AT 11:13 AM REC# 505898 JK# 2071 PG# 1390  
DEBRA K. LATHROP, CLERK OF LARAMIE COUNTY, WY PAGE 1 OF 1